

# DG35 300V 20A 8.25Pitch

## 材质及规格处理

塑件: PA66 UL 94V-0  
端子: 黄铜, 0.8厚 镀锡  
螺丝: 钢, M3 镀镍

## 性能

额定电压/电流: 300V/20A  
使用温度:  $-40^{\circ}\text{C} \sim +105^{\circ}\text{C}$   
耐电压: AC2000V/Min  
绝缘阻抗:  $500\text{M}\Omega / \text{DC}500\text{V}$   
适用线径: 22 ~ 12AWG  
最大锁紧扭力: 8kg/cm

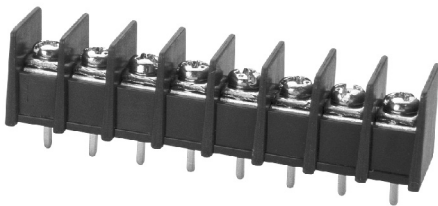
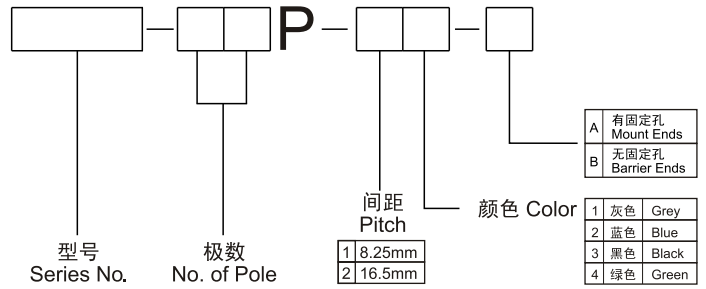
## Materials

Housing: PA66, UL94V-0  
Terminal: Brass, 0.8t, Tin-Plated  
Screw: Steel, M3 Ni-Plated

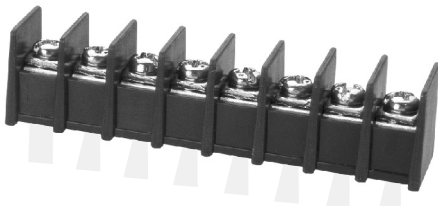
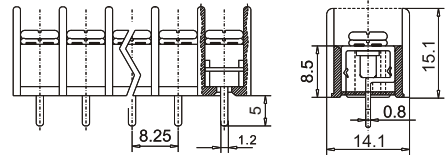
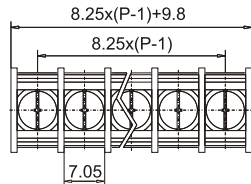
## Capability

Rated: 300V/20A  
Temp. Range:  $-40^{\circ}\text{C} \sim +105^{\circ}\text{C}$   
Withstand Voltage: AC2000V/Min  
Insulation Resistance:  $500\text{M}\Omega / \text{DC}500\text{V}$   
Wire Range: 22 ~ 12AWG  
Max. Torque Value: 8kg/cm

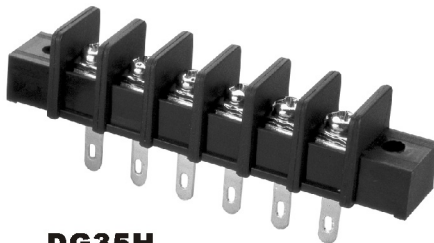
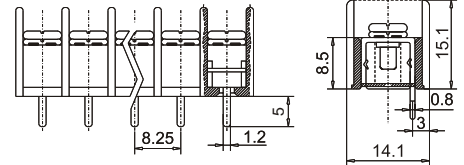
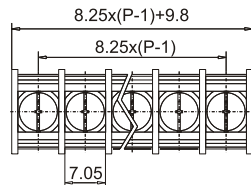
## 订货方式 HOW TO ORDER



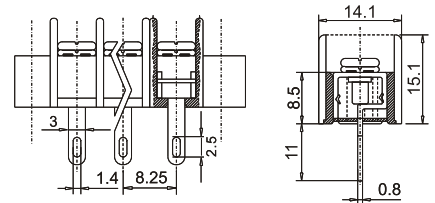
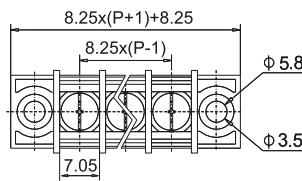
**DG35C**



**DG35S**



**DG35H**



**DG35R**

